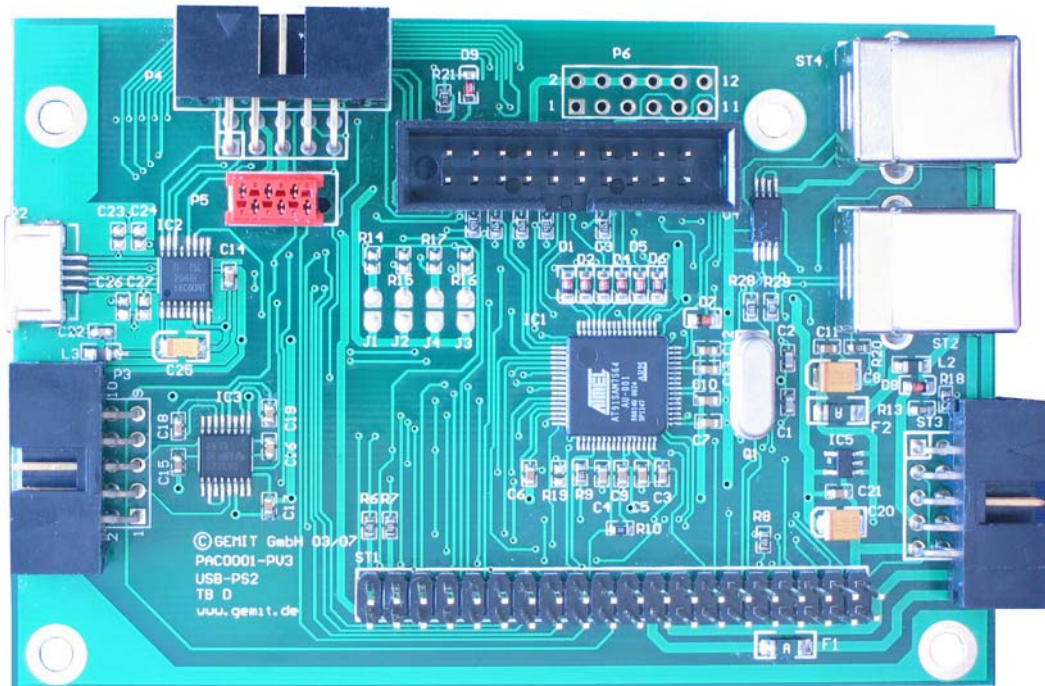


# Panel Controller PACO



## Features

- Host connection to USB or PS/2 interfaces
- Auto detects active interface on USB or PS2
- Supports keyboard matrix up to 128 keys in 16x8 matrix
- Supports macros for each key with up to 7 codes entries for 3 code pages independently programmable for each USB and PS/2
- Support for long macros (32 bytes) on all keys for USB and PS2 on all code pages
- Assignable function shift key to switch to a second or third matrix table
- Direct drive for Caps lock, Num lock and Scroll lock LEDs

- Encryption encoding compliant with FIPS Publication 197, Advanced Encryption Standard (AES) for applications in electronic financial transaction (as option)
- Full USB V2.0 compliance
- Full USB HID V1.1 compliance
- In system programmable KB matrix tables and firmware
- SPI interface (3 channels) for functional expansions
- 4-wire resistive touch screen controller
- Serial interface up to 115 kBaud
- Single +5V power supply over USB or PS2
- Feed through of mouse signals from 40 pin connector to USB B connector
- Low power consumption: 20-100mA max.

Board Dimension 98 x 65 mm

